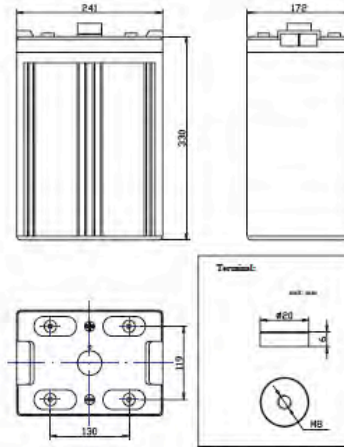


S2-590AGM

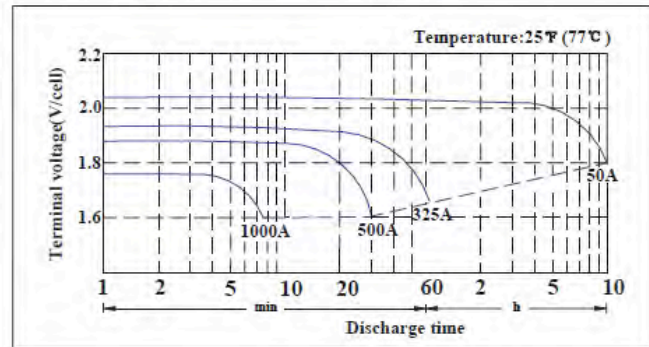
www.antusolar.cl
contacto@antusolar.cl



Specifications

Nominal Voltage		2V
Rated Capacity (10 hour rate)		500AH
Dimension	Total Height	365mm(14.37inches)
	Height	330mm(12.99inches)
	Length	241mm(9.49inches)
	Width	172mm(6.77inches)
Weight		Approx31.50kg (69.3Ibs)

Discharge characteristics 77°F (25°C)



Float charge method: Constant voltage: 2.23V/Cell(25°C)
Temperature compensation factor: - 3mV/°C/Cell

Constant power discharge watts per cell @ 77°F(25°C)

End Point Volt/cell	Operation Time To End Point Voltage																
	5min	10min	15min	20min	25min	30min	35min	40min	45min	1h	2h	3h	5h	8h	10h	12h	24h
1.60	1834	1494	1281	1139	1003	927	855	798	754	645	398	290	192	128	104	87.2	45.2
1.63	1745	1416	1248	1092	971	892	838	784	742	628	386	283	190	128	104	87.2	45.2
1.65	1697	1403	1218	1085	964	884	820	769	730	628	386	283	186	128	103	87.2	45.2
1.67	1639	1380	1193	1063	953	869	808	760	722	628	386	283	186	125	102	87.2	45.2
1.70	1586	1300	1163	1028	925	845	794	751	714	610	376	271	182	125	100.5	87.2	45.2
1.75	1464	1244	1093	984	893	817	767	733	692	593	363	265	178	122	99.5	86.7	45.2
1.80	1327	1142	1007	923	842	789	735	697	670	570	351	262	174	120	98.5	84.5	45.1
1.85	1017	920	858	791	736	685	650	607	586	514	325	244	161	112	93.5	80.2	43
1.90	812	751	706	659	619	591	566	542	525	463	303	224	152	105	88.2	75.6	40.4

Constant current discharge ratings amperes @ 77°F (25°C)

End Point Volt/cell	Operation Time To End Point Voltage																
	5min	10min	15min	20min	25min	30min	35min	40min	45min	1h	2h	3h	5h	8h	10h	12h	24h
1.60	1106	879	732	639	556	510	469	435	409	346	208	152	100	64.9	52.6	44.2	22.9
1.63	1036	842	707	604	536	488	459	422	400	338	205	149	98	64.9	52.6	44.2	22.9
1.65	999	809	684	600	529	484	446	415	393	334	202	147	96.2	64.9	52.1	44.2	22.9
1.67	952	786	663	588	523	473	437	410	388	329	199	144	95.2	64.1	51.5	44.2	22.9
1.70	910	751	643	564	505	458	429	405	383	323	196	141	94.3	63.3	51	44.2	22.9
1.75	827	688	602	537	483	440	410	391	369	312	189	137	91.7	62.5	50.5	43.9	22.9
1.80	731	626	551	500	453	424	392	370	355	300	182	135	89.3	61	50	42.9	22.9
1.85	546	491	457	422	388	359	340	317	305	267	167	125	82	56.8	47.2	40.5	21.7
1.90	427	393	369	343	321	306	292	280	270	237	152	114	76.9	52.6	44.3	38	20.3