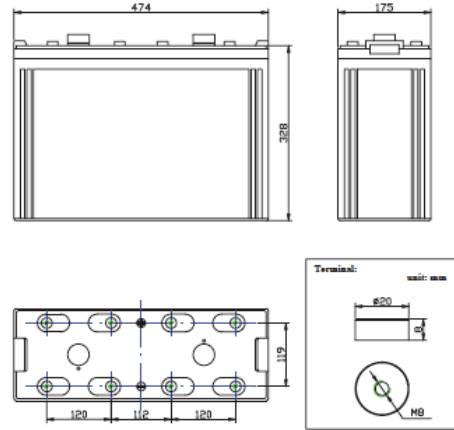


S2-1180AGM

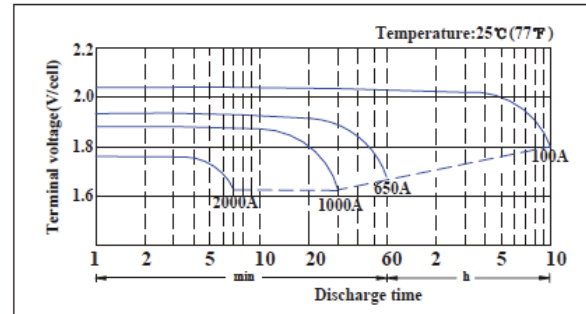
www.antusolar.cl
contacto@antusolar.cl



Specifications

Nominal Voltage	2V	
Rated Capacity (10 hour rate)	1000AH	
Dimension	Total Height	366mm(14.4inches)
	Height	328mm(12.9inches)
	Length	474mm(18.66inches)
	Width	175mm(6.89inches)
Weight	Approx.64.50kg (141.9lbs)	

Discharge characteristics 77°F (25°C)



Float charge method: Constant voltage: 2.23V/Cell(25°C)
Temperature compensation factor: - 3mV/°C/Cell

Constant power discharge watts per cell @ 77°F(25°C)

End Point Volt/cell	Operation Time To End Point Voltage																
	5min	10min	15min	20min	25min	30min	35min	40min	45min	1h	2h	3h	5h	8h	10h	12h	24h
1.60	3669	2987	2591	2278	2008	1856	1711	1596	1509	1289	796	580	384	255	207	174	90.4
1.63	3489	2832	2524	2185	1943	1785	1676	1567	1484	1256	771	566	381	255	207	174	90.4
1.65	3394	2806	2464	2169	1928	1769	1641	1538	1459	1256	771	566	372	255	205	174	90.4
1.67	3277	2760	2416	2126	1907	1737	1614	1520	1444	1256	771	566	372	250	203	174	90.4
1.70	3172	2601	2353	2056	1851	1690	1588	1502	1428	1220	751	543	365	249	201	174	90.4
1.75	2928	2487	2212	1967	1786	1634	1534	1466	1384	1186	726	530	356	244	199	174	90.4
1.80	2654	2284	2039	1846	1684	1578	1470	1393	1340	1142	702	524	347	240	197	169	90.2
1.85	2034	1840	1736	1583	1473	1370	1299	1215	1172	1028	650	488	322	224	187	161	85.7
1.90	1625	1501	1429	1318	1239	1183	1132	1083	1051	925	596	447	306	209	176	151	80.8

Constant current discharge ratings amperes @ 77°F (25°C)

End Point Volt/cell	Operation Time To End Point Voltage																
	5min	10min	15min	20min	25min	30min	35min	40min	45min	1h	2h	3h	5h	8h	10h	12h	24h
1.60	2212	1757	1480	1279	1112	1021	937	869	820	691	417	303	200	130	105	88.5	45.9
1.63	2073	1685	1431	1208	1072	977	919	846	799	677	410	299	196	130	105	88.5	45.9
1.65	1997	1619	1385	1199	1059	966	892	831	786	668	403	294	192	130	104	88.5	45.9
1.67	1904	1573	1342	1175	1046	946	875	819	777	659	398	288	190	128	103	88.5	45.9
1.70	1819	1501	1301	1130	1010	917	859	809	767	647	392	282	189	127	102	88.5	45.9
1.75	1654	1376	1218	1074	966	881	820	782	737	626	377	274	183	125	101	87.7	45.9
1.80	1462	1251	1115	999	906	847	785	739	710	599	364	270	179	122	100	85.8	45.8
1.85	1091	983	923	844	778	719	681	635	611	535	333	250	164	114	94.3	81.1	43.3
1.90	853	786	747	684	641	611	585	559	542	476	303	227	154	105	88.5	75.9	40.6